

Scan the QR code to learn more about the Lane County Sector Strategy Team (LCSST) and our Next General Sector Strategies.



TRANSPORTATION

The Oregon Employment Department has released data on common occupations in the Technology sector, highlighting the 2024 numbers, average wages, and the typical entry-level education for each role. Below is a summary:

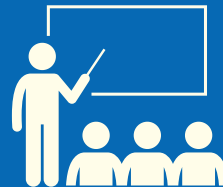
Occupation	2024 Average Annual Wages	Typical Entry Level Education
Architects, Except Landscape and Naval	\$78,362	Bachelor's degree
Biological Technicians	\$50,842	Associate's degree
Bookkeeping, Accounting, and Auditing Clerks	\$50,346	Postsecondary training (non-degree)
Chemists	\$99,837	Bachelor's degree
Civil Engineers	\$99,442	Bachelor's degree
Computer and Information Systems Managers	\$144,266	Bachelor's degree
Computer Programmers	\$95,350	Bachelor's degree
Computer Systems Analysts	\$107,974	Bachelor's degree
Computer User Support Specialists	\$62,716	Postsecondary training (non-degree)
Electrical, Electronic, and Electromechanical Assemblers, Except Coil Winders, Tapers, and Finishers	\$45,790	High school diploma or equivalent

2,548
TOTAL
EMPLOYEES



3,007
NEW &
REPLACEMENT
OPENINGS BY
2032

10%
FORECASTED
GROWTH BY
2032



\$143
MILLION
IN LANE COUNTY
PAYROLL

211
TOTAL
ESTABLISHMENTS



\$56,505
AVERAGE
WAGE

OUR MISSION:

To meet the workforce needs of employers and individuals through partnerships and innovation.



TRANSPORTATION



Industry Partners led a “Touch a Truck” event at the Eugene, Oregon Airport in August of 2024.

The transportation sector combines the truck transportation, transit and ground passenger transportation, warehousing and storage, and related activities industries. Combined, these industries include 211 firms that produced annual average employment of 2,548 and \$143 million in total payroll in 2023.

Going forward, Oregon Employment Department forecasts show strong growth with the addition of 253 new jobs for a 10% growth rate between 2022 and 2032 equaling the all industries average. Growth is helped as demand from e-commerce for deliveries through trucking and warehousing increases. In addition, an aging workforce will help add 2,755 replacement openings for a total of 3,007 openings over the 10-year period.

Lane Workforce Partnership is proud to have partnered with the Southern Oregon Workforce Investment Board (SOWIB), and Rogue Workforce Partnership on Driving Prosperity through the Economic Development Administration’s Good Jobs Challenge. This fantastic initiative has enabled over 325 Oregonians the opportunity to obtain their CDLs, opening doors to new opportunities and driving prosperity across our communities. The strategic partnership was honored as one of 32 recipients nationwide to receive funding from the EDA's Good Jobs challenge, a transformative opportunity aimed at bolstering local economies and placing an additional 50,000 workers in quality jobs through innovative training programs.

The overall average annual wage of \$56,505 in the transportation sector is just slightly more than the all industry wage in Lane County largely due to low wages in the transit and ground transportation portion of the sector. A look at common occupations in the sector shows that most are low to medium wage jobs with attainable education levels.

The Lane County Sector Strategy Team (LCSST) utilizes the [Next Generation Sector Partnerships model](#), a nationally recognized approach. For more information, visit: <https://tinyurl.com/LaneWorkforce>