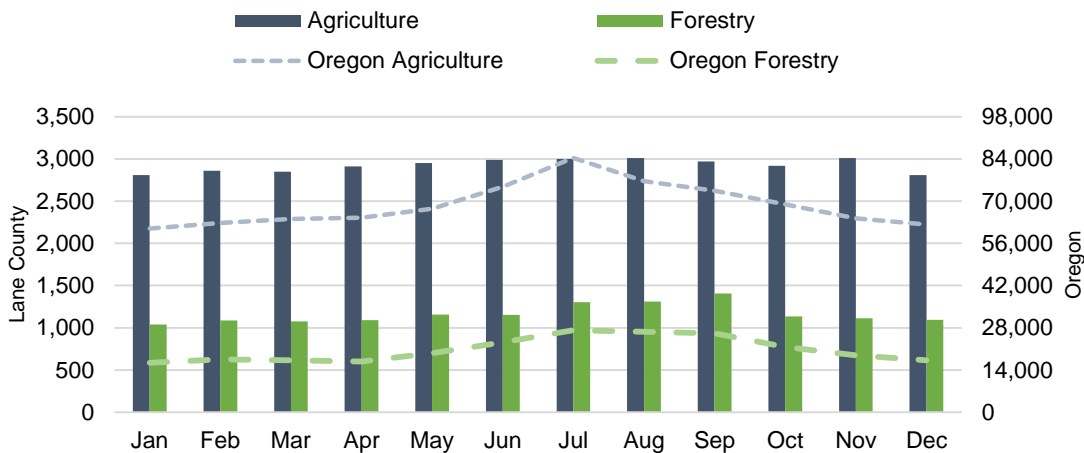


LANE COUNTY ECONOMIC INDICATORS

June 2024

Graph of the Month: Agriculture and forestry jobs make up slightly less of the job mix in Lane County than the state. However, local natural resources and farm jobs tend to be much less seasonal; peak employment is only 15% higher than in the off season, compared to about 40% statewide.

Agriculture and Forestry Employment Lane County, 2023



Source: Oregon Employment Department, Agricultural Estimates and QCEW

Notable Over-the-Year Employment Changes May 2023 to May 2024

Private Education and Health Services: 1,700 (+6%)
Professional and Business Services: -800 (-4%)
Leisure and Hospitality: -200 (-1%)
Retail Trade: -1,000 (-5%)
All Industries: 1,600 (+1%)

Employment change from February 2020 (seasonally adjusted):
 -2,100 (-1%)

Source: [Oregon Employment Department Current Employment Estimates](#)

News and Articles

QualityInfo: [The Changing Face of the Nursing and Residential Care Industry](#) by Lynn Wallis

QualityInfo: [Oregon's Per Capita Personal Income 2023](#) by Molly Hendrickson

Oregon Office of Economic Analysis Blog: [Oregon Economic and Revenue Forecast, June 2024](#)

Latest Lane County Economic Data

Unemployment rate: [4.3%](#)
 (seasonally adjusted)

Change from previous year: [+0.6 pct. points](#)

Per capita personal income in Oregon, 2023:
[\\$65,426](#)

Business highlights: [new openings, closings & hiring events](#)

- **Expansion:** Praxis Health in Eugene will open Pearl Street Medical.
- **New Construction:** Pine Springs, a 120-unit apartment complex, will open in Cottage Grove.
- **Expansion:** White Bird Clinic in Eugene opened the Harm Reduction Treatment Center.
- **New Construction:** Our Coastal Village opened Oak Manor, a 24-unit apartment complex, in Florence.

[QualityInfo.org](#): your source for the latest economic data, highlights and analysis



Manage your subscriptions to this newsletter and other data releases on our [subscription page](#).