

Scan the QR code to learn more about the Lane County Sector Strategy Team (LCSST) and our Next General Sector Strategies.



CONSTRUCTION

The Oregon Employment Department has released data on common occupations in the Construction Aggregate sector, highlighting the 2024 numbers, average wages, and the typical entry-level education for each role. Below is a summary:

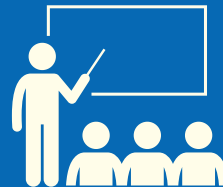
Occupation	2024 Average Annual Wages	Typical Entry Level Education
Bookkeeping, Accounting, and Auditing Clerks	\$50,346	Postsecondary training (non-degree)
Carpenters	\$57,737	High school diploma or equivalent
Cement Masons and Concrete Finishers	\$62,642	Less than high school
Construction Laborers	\$48,209	Less than high school
Construction Managers	\$111,588	Associate's degree
Electricians	\$78,737	High school diploma or equivalent
First-Line Supervisors of Construction Trades	\$84,516	High school diploma or equivalent
General and Operations Managers	\$101,773	Bachelor's degree
Heating, Air Conditioning, and Refrigeration Mechanics	\$62,758	Postsecondary training (non-degree)
Heavy and Tractor-Trailer Truck Drivers	\$59,763	Postsecondary training (non-degree)
Office Clerks, General	\$44,427	High school diploma or equivalent

8,188
TOTAL
EMPLOYEES



8,803
NEW &
REPLACEMENT
OPENINGS BY
2032

15%
FORECASTED
GROWTH BY
2032



\$544
MILLION
IN LANE COUNTY
PAYROLL

1,331
TOTAL
ESTABLISHMENTS



\$66,485
AVERAGE
WAGE

OUR MISSION:

To meet the workforce needs of employers and individuals through partnerships and innovation.



CONSTRUCTION



Industry partners host youth for Sand & Gravel Tour, April 2024.

Construction and mining are two closely related industries in Lane County that have been combined into a single sector. Almost all mining employment in Lane County is local sand and gravel companies that produce construction aggregate. The construction - aggregate sector has seen strong growth following losses during the Great Recession. After bottoming out in 2011 at 5,256 jobs, employment grew to 8,188 in 2023.

Construction-aggregate is expected to grow slower than the overall economy at 15 percent between 2022 and 2032 resulting in 1,191 new jobs, compared to 10 percent for all industries. In addition, there are 7,612 expected replacement openings for a total of 8,803 openings over the ten-year period.

Annual average wages in construction aggregate are higher than the overall average for all industries at \$66,485 compared to \$56,320 in 2023. Lane County's total payroll in Lane County Top Occupations in the Construction - Aggregate Sector by Entry Level Education construction-aggregate was \$544 million. Even though wages are higher on average than for all industries, most occupations in construction-aggregate require only a high school diploma or less for the typical entry level position, providing good paying jobs at lower educational levels.

The industry faces some challenges due to an aging workforce. With 46 percent of its workers over the age of 45, the majority of skilled workers are being lost, and according to local employers, it is difficult to attract younger workers who are more interested in other industries like technology and entrepreneurship.

The Lane County Sector Strategy Team (LCSST) utilizes the [Next Generation Sector Partnerships model](#), a nationally recognized approach. For more information, visit: <https://tinyurl.com/LaneWorkforce>