

Scan the QR code to learn more about the Lane County Sector Strategy Team (LCSST) and our Next General Sector Strategies.



BEHAVIORAL AND COMMUNITY HEALTH SERVICES

The Oregon Employment Department has released data on the common occupations in Behavioral and Community Health Services sector, highlighting the 2024 numbers, average wages, and the typical entry-level education for each role. Below is a summary.

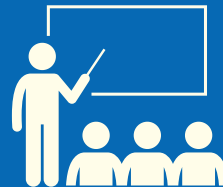
Occupation	2024 Average Annual Wages	Typical Entry Level Education
CADC I & II	\$61,651	Bachelor's degree
Case Workers	\$46,176	High school diploma or equivalent
Certified Recovery Mentors	\$61,256	Master's degree
Community Health Workers	\$58,240	Postsecondary training (non-degree)
Crisis Intervention	\$49,024	High school diploma or equivalent
Doula	\$47,005	High school diploma or equivalent
Peer Support Specialist	\$49,325	High school diploma or equivalent
QMHA	\$61,651	Bachelor's degree
QMHP	\$61,651	Bachelor's degree
Street Outreach Workers	\$58,240	Postsecondary training (non-degree)
Traditional Health Workers	\$58,240	Postsecondary training (non-degree)

2,372
TOTAL
EMPLOYEES



2,879
NEW &
REPLACEMENT
OPENINGS BY
2032

20%
FORECASTED
GROWTH BY
2032



\$133
MILLION
IN LANE COUNTY
PAYROLL

208
TOTAL
ESTABLISHMENTS



\$55,729
AVERAGE
WAGE

OUR MISSION:

To meet the workforce needs of employers and individuals through partnerships and innovation.

